



STHAPONA ASSOCIATES (BD) LTD.

suite-b5, house-86, road-10/1, block-d, niketon, gulshan-01

TEL. (88) 029853101

Email: [sthapona.dhaka@gmail.com](mailto:sthapona.dhaka@gmail.com)





---

**STHAPONA** is an architectural and Interior design firm established in the year 2000. With its collaboration in Thailand it is now one of the renowned international design group involved in the Hospitality and Hotel design along with management services. We have vast experience in the Interior, Building Exterior design and project management for various projects of varying sizes and complexity including 5-star hotels & resorts, Service apartments, office buildings, Condominiums, Water theme park, swimming pool or Olympic pools and many more.

**STHAPONA** has been working responsibly for designing and building some of the most luxurious 3, 4, 5 & 7 Star properties from the high end Architecture, Interior Design & Fit out construction FF&E, Furniture Design through Landscape & Precision in Construction/ Project Management. STHAPONA deals with every aspect of the luxurious Interior Designs from unique wall to intricate Ceiling and exotic flooring with lavish Medallion, indoor theatre and swimming pools, water features.

#### **INTERNATIONAL PARTNERS :**

Architectural & Interior Design Services STHAPONA is working under the banner of **STHAPONA & PARTNERS** with **LEO-INTER** and **KUPPSS COLLABORATIONS LTD.** as our partners. STHAPONA is working with various international design firms as an international design group like with **BSA, Int'native, PALICON**, in various sector and now becoming the pioneer in Bangladesh. Like Project and Construction Management- **DSPM** of Thailand and the British owned company **COMCON** and **LEO INTERNATIONAL** in China. For Entertainment like studio city, Theme Park we are working with **FORREC**, For Water Theme park, Water Features & Olympic Swimming Pool or anything related to swimming pool, fish pond, fish park- **POOL & FT. CO.** is our partner. For Interior Decoration & Services- **PTL – INTERIOR DECORATION CO. LTD.**, **AMO**, MEP Design Services- **UCC – UTHAI CONSULTANT CO. LTD.**, and many more like **AWP** in Singapore, **BOSE ARCHITECTS** in Sweden along with lot of local counterpart in the relevant design services

---

---

## **MISSION STATEMENT**

Customer focus is our goal to exceed our valued customers expectation of providing the professional service by delivering exceptional quality and personalized service.

We always believed in long & healthy business relationship with our business partners and clients.

Our aim is to deliver the best when undertaking the project from the drawing board to complete interior fit-out

---

---

## SERVICES

### *A) Core Services:*

- Interior Design
- Planning and Urban Design
- Architecture
- Brand Design
- Consulting

### *B) Project Types and Area of Expertise:*

- Hospitality
- High-end Residential
- Healthcare and Hospitals
- Commercial Offices
- Retail

### *c) Turn-Key Solutions:*

- Offices & Institutional
- High-end Residential Projects
- Hospitality Projects
- Hotels & Resorts

### *D) Graphic Design and Way Finding:*

- Graphic Design for hospitality and commercial applications
-

**H**OTEL, RESORTS & **H**OSPITALITY

# 5-STAR MOVENPIC HOTEL KHULNA

## Land Area:

2.0 Bigha

## Location:

Baikali, Khulna, Bangladesh.

## Client:

Ahyan Hotel & Resorts Ltd.

## Built Area:

40,000 sqm

## Features:

Total Room Nos. 214 key  
5 Star Movenpick Hotel  
12 Nos. Executive Suites  
850 PAX Banquet Hall  
300 PAX Grand Ball Room  
Indian & Chinese 2 Specialty Restaurants All day  
Dinning, Buffet Area, Banquet Kitchen, Arrival  
Lounge, Coffee Shop, Rooftop BBQ, Sports BAR,  
Exhibition Gallery, Executive Lounge, Retails,  
Lobby BAR, Meeting & Conference, Kids club,  
Laundry, GYM, Health Club, Swimming pool,  
Jacuzzi, Sauna, Steam Bath, SPA, Men's &  
Women's Parlor, Money exchange & ATM.

## Scope of Work:

1. Architecture design
2. Interior design (with Leo-Inter, Bangkok)
3. MEP Design (with UCC, Thailand)
4. Lighting design (with Leo-Inter, Bangkok)
5. Structural design
6. Landscape Design





## 5-STAR MOVENPIC HOTEL KHULNA

### Scope of work:

From conceiving of the hotel idea and the design inception of project, pre-contract presentation, Selection of the International Star Hotel Chain, Finalizing the Brand Product, Post Contract Design Documentation along with International Design Partners all the responsibilities lying on Sthapona's shoulder.

The Design Scope are as below:

1. Architectural design
2. Structural design
3. Interior design (with Leo-Inter, Bangkok)
4. MEP Design (with UCC, Bangkok)
5. Lighting Design (with Leo-Inter, Bangkok)
6. Facade Design (with Teasco, Australia)
7. Cost Consultant (with COMCON)
8. Project Management



5-STAR MOVENPIC HOTEL KHULNA





5-STAR MOVENPIC HOTEL KHULNA



Toilet



Guest Room



Exhibition Gallery



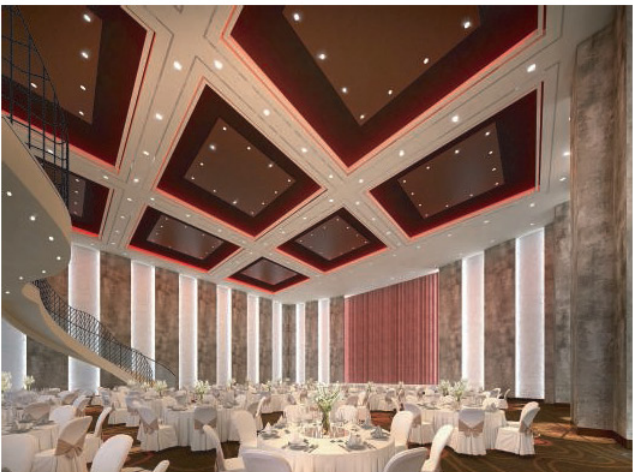
Exhibition Gallery



5-STAR MOVENPIC HOTEL KHULNA



Banquet Hall



Convention Hall



All Day Restaurant



Bar

5-STAR MOVENPIC HOTEL KHULNA



Reception Lobby



Lift Lobby



Guest room



Toilet area



5-STAR MOVENPIC HOTEL KHULNA



Reception Lobby



Convention hall



All day Restaurant



Cafe

5-STAR MOVENPIC HOTEL KHULNA



Lobby



Meeting room



Corridor



Lobby Lounge



# LE MERIDIEN DHAKA

## Land Area:

1.5 acres

## Location:

79/A, Commercial Area, Airport Road, Nikunja-2.

## Client:

Best Holdings Ltd.

## Features:

Total Room : 304 Keys

Executive Floors & Exec. Lounge, Presidential Suit, Lobby Lounge & BAR, Arrival Lounge, Back office, Meeting & Conference Area, Grand ball room, All day Dinning, Largest Kitchen Area, Arabic specialty restaurant, Italian Specialty Restaurant, VIP Dining, Indoor dining, Rooftop Outdoor landscape & dining, Office space. Retails, First Infinity Swimming pool of Bangladesh & Pool bar.

## Scope of Work:

1. Architectural design (with BSA, Bangkok)
2. Interior Space Planning (with BSA, Bangkok)
3. MEP Design (with UCC, Bangkok)
4. PMCM (with COMCON)



## Features:

Banquet hall  
Convention hall  
All day Restaurant  
Bar

# LE MERIDIEN DHAKA

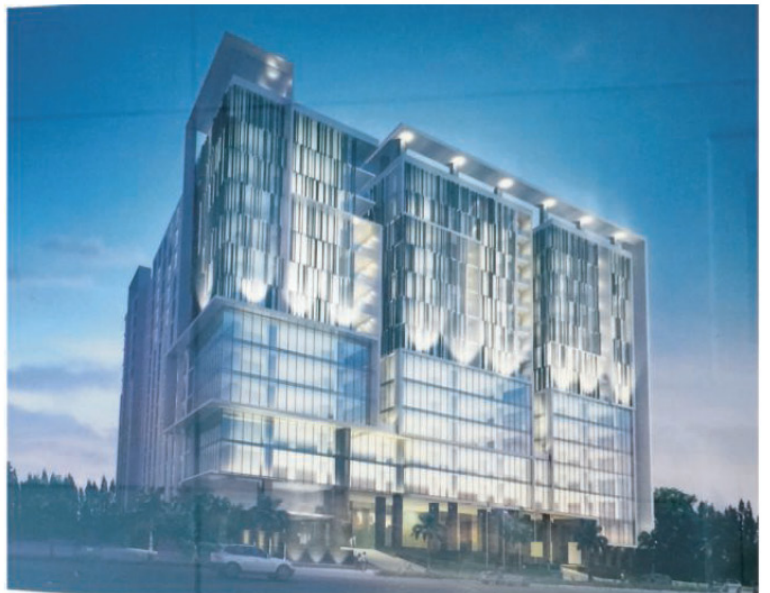
## CHALLENGES :

We got the existing design of 450 key hotel room plan which comes with 65% closed room from the previous architect of Best Western that we converted into the brand standards of STARWOOD - LE MERIDIEN.

We had to retrofit the existing commercial building to convert it to a 5 Star Hotel and we cut down 30% of the center of the building and made two vertical green court to open up the rooms.

Another challenge was the outlook of the Building, as it was a commercial structure and we have to convert it to a Luxurious Hotel Look. In the first STARWOOD approved the look shown in this page. But we have to finalize the later option which we shown in the earlier page. But unfortunately the owner made many variations from that also which we can see now after operations.

3rd challenge was lighting design as the below 7 (seven) floors were sold out as commercial floors before signing with STARWOOD. So in beside image we successfully come out with the lighting solution where the below floors are showing as commercial floors in lighting & the upper hotel part is characterizing the glory of Hotel Le Meridien.





LE MERIDIEN DHAKA



Outdoor landscape



Wash



Indoor dining



Dining

LE MERIDIEN DHAKA



Infinity swimming pool



Banquet hall



LE MERIDIEN DHAKA



Guest room



Dining



Outdoor landscape



Indoor dining

# HOLIDAY INN CITY CENTER DHAKA

## Land Area:

2.0 Bigha

## Location:

23 Shahid Tajuddin Road, Dhaka, Bangladesh.

## Client:

Marium Group.

## Features:

Total Room Nos. : 186 Key

Total No. of Executive Suites : 21 nos.

Ministerial Suite : 01 nos.

Arrival Lounge, All day Dinning, Western Pub Bar, Buffet Lounge, Specialty Restaurant, Lobby Lounge, Coffee Shop, Rooftop Party Area, Meeting & Conference Room, Laundry, GYM & Health Club, Swimming pool, Jacuzzi, Sauna, Steam Bath, SPA, Men's Salon, Women's Parlor.

## Scope of Work:

### 1. Architecture Design

(Renovation & redesign of further extension)

### 2. Space Planning (with KUPSS Bangkok)

### 2. Interior Design





## HOLIDAY INN CITY CENTER DHAKA

### CHALLENGES :

We got the existing design of hotel room plan which we redesigned to accommodate according to the Holiday Inn Brand Standard Space Plan & then IHG approved accordingly we had to make the compliance for fire fighting accordingly adding two fire stair exit & retrofit the existing commercial building to convert it to a 3 Star Holiday Inn Hotel and we cut down 30% of the center of the building and made two vertical green court to open up the rooms.

Another challenge was outlook of the Building, as it was a commercial structure and we have to convert it to a Luxurious Hotel Look. The most concerned was the floor to floor existing height which was 2.85 meter only and we have to make the solution to get a grand arrival with a connection to the restaurant from ground to the next level by a grand stair through the double height loft as it resembles itself a live chandelier of glass & marble. We added three more floors on top of the existing building to accommodate lofted Grand Ball Room, Western Pub Bar, Roof top GYM with panoramic view, one Helistop & Glasshouse BBQ rooftop with overflow scenic Swimming Pool.

3rd challenge was adding the service access by demolishing the side building and accommodate the WWTP block in such intelligent way to save the space underground make it green engage as per the IHG guideline.



## HOLIDAY INN CITY CENTER DHAKA



## HOLIDAY INN CITY CENTER DHAKA



Guest Room (Twin)



Guest Room



## HOLIDAY INN CITY CENTER DHAKA



Western pub bar

## HOLIDAY INN CITY CENTER DHAKA



Indian Specialty Restaurant



## HOLIDAY INN CITY CENTER DHAKA



Indian Specialty Restaurant



Western pub bar



## HOLIDAY INN CITY CENTER DHAKA



Gym

## HOLIDAY INN CITY CENTER DHAKA



Swimming pool



## BG HOTEL

### Land Area:

25 Bigha

### Location:

Bashundhara, Dhaka, Bangladesh

### Client:

Bashundhara Group.

### Features:

2002 Guest Rooms, Lobby/Lounge, All day dining, Front office, Cafeteria, Coffee shop, Back office, Party/BBQ Area, Meeting rooms, Ball room, BOH, Catering center .

### Scope of Work:

1. Architectural Concept design
2. Interior Concept design



# CONCORD RESORT & VACATION HOUSE - FANTASY KINGDOM

## Land Area:

22 Bigha

## Location:

Fantasy Kingdom, Ashulia, Bangladesh

## Client:

Concord Group.

## Built Area:

Type A: 4,000 sft

Type B: 5,000 sft

## Features:

Different type Resort Bungalows & Pool Villas

Living, Dining, Kitchen, Bed rooms, Terrace, GYM, Indoor game Home theatre, Swimming pool, Roof top Garden.

## Scope of Work:

1. Master Layout Revision
2. Architectural design
3. Interior design
4. Landscape Design



CONCORD RESORT & VACATION HOUSE - FANTASY KINGDOM





# CONCORD CLUB HOUSE

## Land Area:

1 Bigha

## Built Area:

2260 sqm

## Location:

Fantasy Kingdom, Ashulia, Bangladesh

## Client:

Concord Group.

## Features:

Arrival & Lounge, GYM, Swimming Pool, Jacuzzi, Indoor games, Outdoor game, Movie theatre, Terrace, Back Office, Meeting room, Club Facilities, Banquet Hall, Lockers, Change Room.

## Scope of Work:

1. Architectural design
2. Landscape design
3. Interior design
4. MEP Design
5. Kitchen, F&B Design



# PROPOSED 5-STAR OASIS HOTEL

## Land Area:

2.5 Bigha

## Location:

Kalatoli Cox's Bazar, Bangladesh.

## Client:

4P Group

## Features:

Arrival & Lounge, Banquet Hall, Office area, BBQ, Kids Play area, Terrace, Rooftop Garden.

## Scope of Work:

1. Pre-Contract Presentation
2. Interior design Concept



# CORAL REEF HOTEL & SERVICE APARTMENT

## Land Area:

1503.9 sqm

## Built Area:

9745 sqm

## Location:

Khanbari, Chittagong, Bangladesh.

## Client:

Coral Reef Properties Ltd.

## Features:

72 Key boutique Hotel & Apartments

Waiting area, Basement parking, community space, terrace, Indoor games, Roof top garden & retails.

## Scope of Work:

1. Architectural design
2. Structural design
3. Interior Space Planning





CORAL REEF HOTEL & SERVICE APARTMENT



# PROPOSED 5 STAR CORAL REEF RESORT AT COXS' BAZAR

## Land Area:

5 Bigha

## Location:

Cox's bazar, Bangladesh.

## Client:

Coral Reef Properties Ltd.

## Features:

184 Key full service hotel

All day Dinning, Buffet Lounge, Lobby Lounge, Arrival Lounge, Coffee Lounge, Rooftop Lounge, Sports Lounge, Exhibition, Gallery, Meeting & Conference Room, Laundry, GYM & Health Club, Swimming pool, Jacuzzi, Sauna, Steam Bath, SPA, Men's Parlor, Women's Parlor, and Guest Room.

## Scope of Work:

1. Architectural Concept design (with BSA)
2. Space Planning (with BSA, Bangkok)
3. Interior Concept design
4. Pre Contract presentation



# PROPOSED HOTEL & SERVICE APARTMENT

## Land Area:

1503.9 sqm

## Built Area:

9745 sqm

## Location:

Khan Bari, Chittagong, Bangladesh.

## Client:

Coral Reef Properties Ltd.

## Features:

42 key Service Suites & Apartments

Lobby Lounge, Arrival Lounge, Coffee Lounge, Rooftop Lounge, Meeting & Conference Room, GYM & Health Club, Swimming pool, Jacuzzi, Sauna, Steam Bath, SPA, Apartment and Guest Room.

## Scope of Work:

1. Architectural design (with KUPPS, Bangkok)
2. Interior design (KUPPSS Collaboration)





## PROPOSED HOTEL & SERVICE APARTMENT



# MOVENPICK GRAND SYLHET HOTEL

## Land Area:

8149.3 sqm

## Location:

Sylhet, Bangladesh.

## Client:

Global Asset Ltd.

## Features:

Total Room Nos. 270 Keys

All day Dinning, Buffet Lounge, Lobby Lounge, Arrival Lounge, Coffee Shop, Rooftop Lounge, Kids' Sports, Cineplex, Meeting, Banquet Hall, Conference Room, Laundry, GYM & Health Club, Swimming pool, Jacuzzi, Sauna, Steam Bath, SPA, Retails, Kids club Executive Suites.

## Scope of Work:

1. Architectural design (with BSA, Bangkok)
2. Structural design
3. Interior design (with BSA, Bangkok)
4. MEP Design (with BSA, Bangkok)



## MOVENPICK GRAND SYLHET HOTEL



Guest Rooms.



## MOVENPICK GRAND SYLHET HOTEL



Guest Room



Lobby Lounge

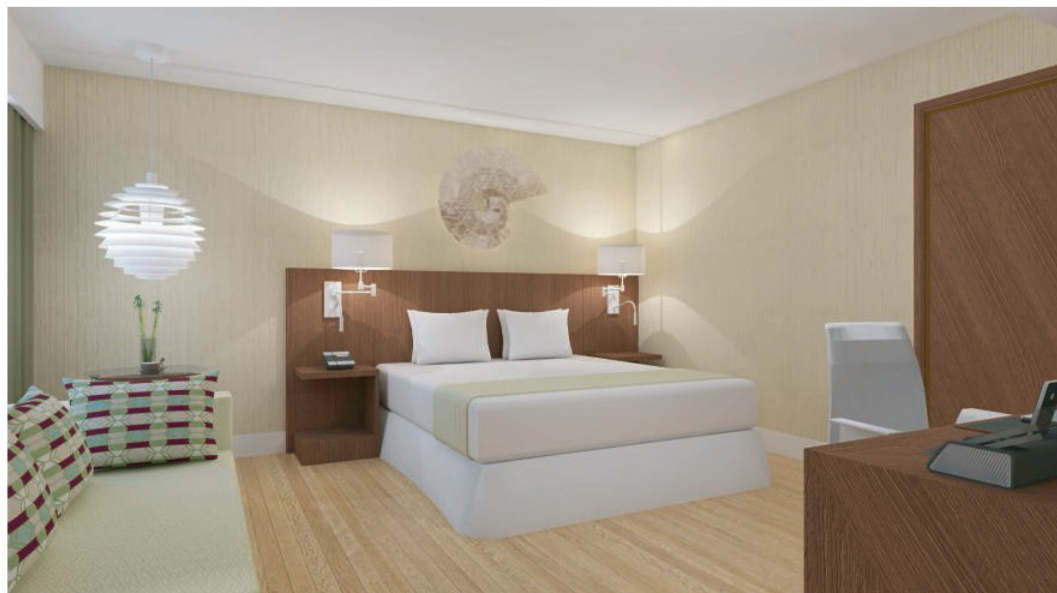


Allday Dining



Coffee Shop

## MOVENPICK GRAND SYLHET HOTEL



Guest Rooms.



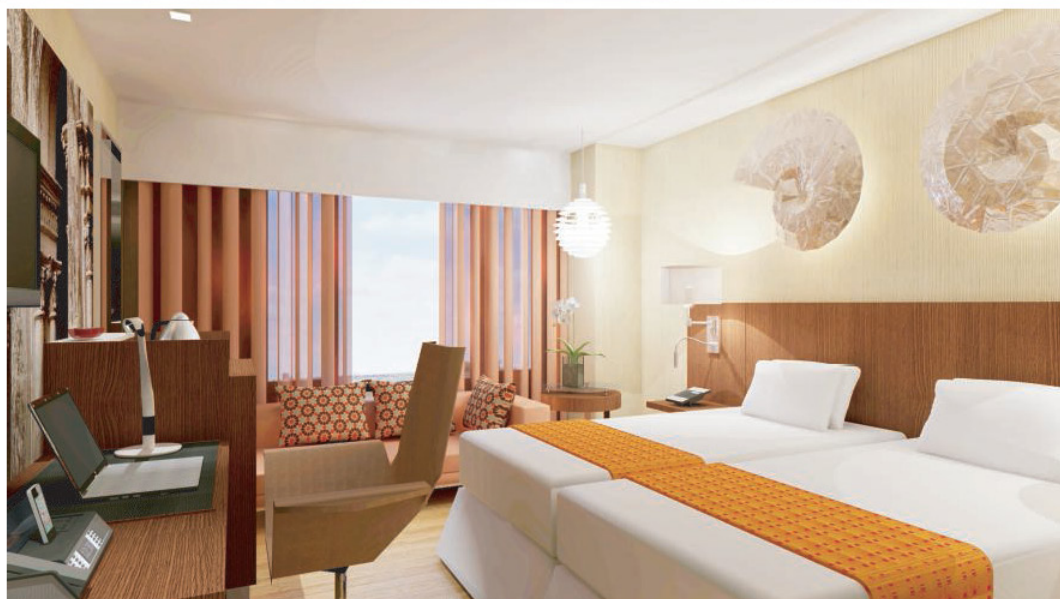
## MOVENPICK GRAND SYLHET HOTEL



Guest Rooms.



## MOVENPICK GRAND SYLHET HOTEL



Guest Rooms.

## MOVENPICK GRAND SYLHET HOTEL



Guest Rooms.



Toilet area

# SHELTECH PLATINUM RESIDENCE

## Land Area:

7.5 Katha

## Location:

Uttara, Dhaka, Bangladesh.

## Client:

Sheltech (Pvt.) Ltd..

## Features:

36 Key Boutique Hotel

All day dining & Restaurant, Rooftop Back Off.,  
Arrival, Meeting Room, Lobby Lounge, Terrace.

## Scope of Work:

1. Architectural design (with KUPPSS, Bangkok)
2. Interior design (with KUPPSS, Bangkok)





# SHELTECH HRC PLATINUM GRAND (PLATINUM SUITES EXTENSION)

**Land Area:**

20 Katha

**Location:**

Road 11, Banani, Dhaka, Bangladesh.

**Client:**

Sheltech (Pvt.) Ltd..

**Scope of Work:**

50 key extension of Platinum Suites Hotel

1. Architectural design (with BSA, Bangkok)
2. Interior design (with BSA, Bangkok)
4. MEP Design (UCC)



## 5 STAR RESORT AT AO-PO BEACH, PHUKET

### Location:

AO-PO Beach, Phuket

### Scope of Work:

1. Master plan (with KUPPSS COLLABORATION)
2. Architectural Concept design (BSA, Thailand)



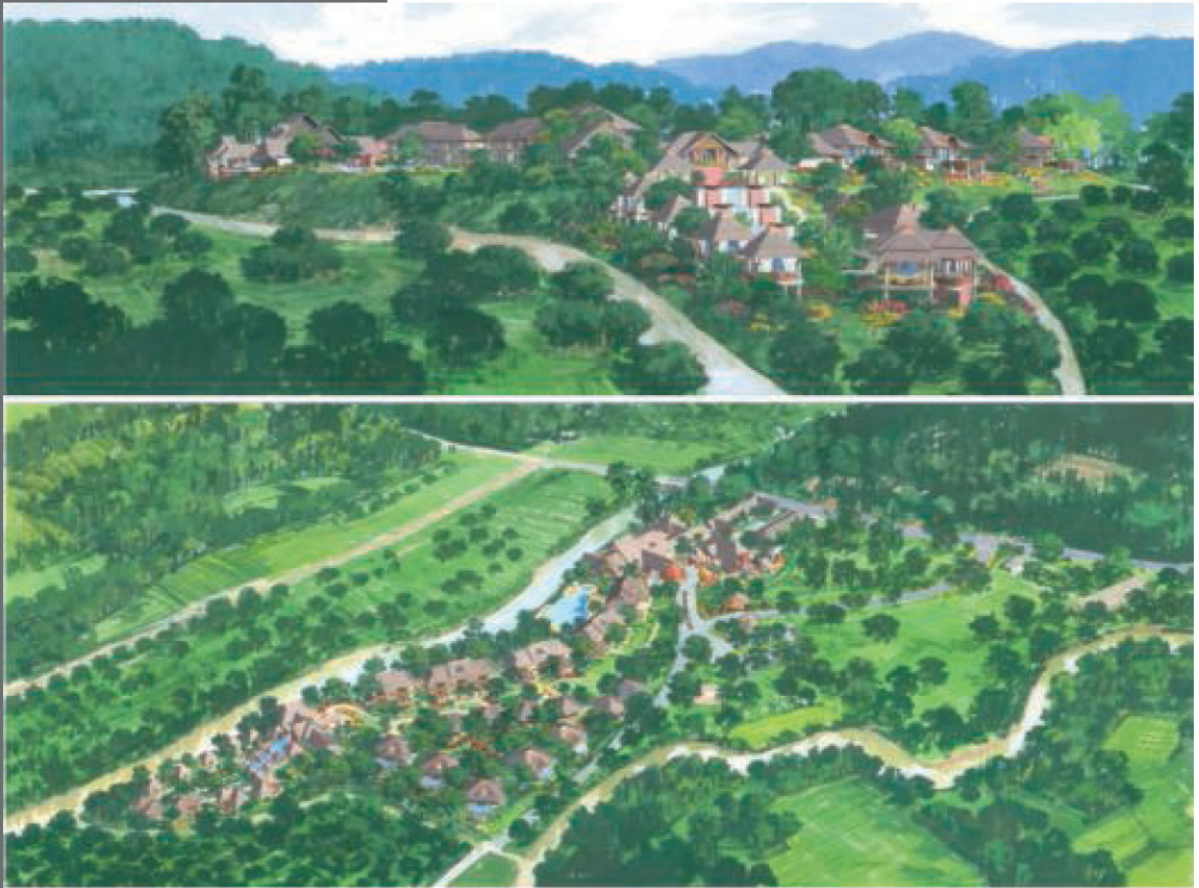
# HOT SPRING & SPA RESORT AT BANGKOK, THAILAND

## Location:

National Park, Bangkok

## Scope of Work:

1. Master plan (with KUPPSS COLLABORATION)
2. Architectural Concept design (BSA, Thailand)





# PROPOSED JOMTIAN RESORT - PATTAYA

## Location:

Pattaya, Thailand

## Client:

Siam Group

## Scope of Work:

1. Master plan (with KUPPSS COLLABORATION)
2. Architectural Concept design (BSA, Thailand)



# THE EMERALD CONDOMINIUM & RESORT

## Location:

AO-PO Beach, Phuket

## Scope of Work:

1. Master plan (with KUPPSS COLLABORATION)
2. Architectural Concept design (BSA, Thailand)



Lacini Dara  
Lacini Dara



# GRAND MERCURE KARON BEACH-PHUKET

## Location:

Karon Beach, Phuket, Thailand

## Scope of Work:

1. Master plan (with KUPPSS COLLABORATION)
2. Architectural Concept design (BSA, Thailand)





# VAN DANG MARINA & VILLAS PROJECT DEVELOPMENT

## Location:

Vietnam

## Scope of Work:

1. Master plan (with BSA, Thailand)
2. Architectural Concept design



# COX'S BAZAR BEACH HOTEL BANGLADESH

## Location:

Cox's Bazar, Bangladesh

## Land Area:

5 Bigha

## Client:

Sheltech Properties Ltd.

## Built Area:

36,500 sqm

## Scope of Work:

1. Master plan (with KUPPSS COLLABORATION)
2. Architectural Concept design (with BSA)
3. Pre Contract Presentation (with BSA)

## Challenges:

The location was mainly on the beach part of Cox's Bazar which was challenge for making the construction which eventually was stopped by the authority for getting no approval.



# BASHUNDHARA INTERNATIONAL SCHOOL

## Land Area:

60 Bigha

## Location:

Bashundhara R/A, Dhaka, Bangladesh

## Client:

Bashundhara Group.

## Total Capacity:

25,000 students

## Total Built Area:

1,54,200 sqm

## Features:

Elementary Section (Block -1), Class I to VII  
Section (Block -2), Class VIII to XII Section  
(Block-3), Canteen/ Cafeteria, Multipurpose Hall,  
Central Library with Mezzanine Floor indoor game  
block, Outdoor swimming pool with diving,  
Tennis court, Cricket ground, Football ground,  
Music & art block, Auditorium, Admin block,  
Basement school Bus Parking, Drivers Zone,  
Security Block, etc.

## Scope of Work:

1. Architectural Concept design
2. Interior Space Planning





# BASHUNDHARA INTERNATIONAL INSTITUTE

## Land Area:

15 Bigha

## Location:

Bashundhara, Dhaka, Bangladesh

## Client:

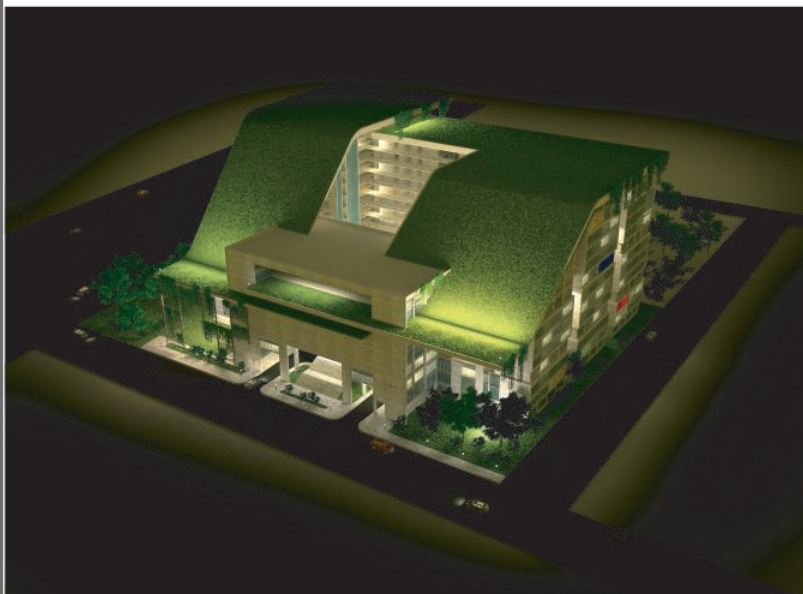
Bashundhara Group.

## Features:

Class rooms, Lab, Lecture room/ exam, Canteen/ Cafeteria, Multipurpose Hall, Central Library, Indoor game block, Swimming pool, Gym, Tennis court, Cricket ground, Football ground, Admin block

## Scope of Work:

### 1. Architectural Concept design



# MIRAGE BOUTIQUE HOTEL BANANI, DHAKA

## Land Area:

374.75 sqm

## Location:

Banani, Dhaka, Bangladesh

## Client:

H Square Properties.

## Features:

**50 Key Boutique Hotel**

2 Nos. Executive Suites

48 Deluxe queen

All day dining & Restaurant, Back Office, Arrival,  
Meeting Room, Lobby Lounge, Terrace.

## Scope of Work:

1. Architectural design
2. Interior design
3. MEP Design



## MIRAGE BOUTIQUE HOTEL BANANI , DHAKA





## MIRAGE BOUTIQUE HOTEL BANANI , DHAKA



Restaurant Lounge



Guest room

## MIRAGE BOUTIQUE HOTEL BANANI , DHAKA



Guest room



Guest room

## MIRAGE BOUTIQUE HOTEL BANANI , DHAKA



Guest room



# HOWARD JOHNSON HOTEL AT MOHAKHALI, DHAKA

## Land Area:

593 sqm

## Location:

Mohakhali, Dhaka, Bangladesh

## Client:

MIAH'S MAJESTIC HOTEL & RESORTS LTD.

## Built area:

8956 sqm

## Features:

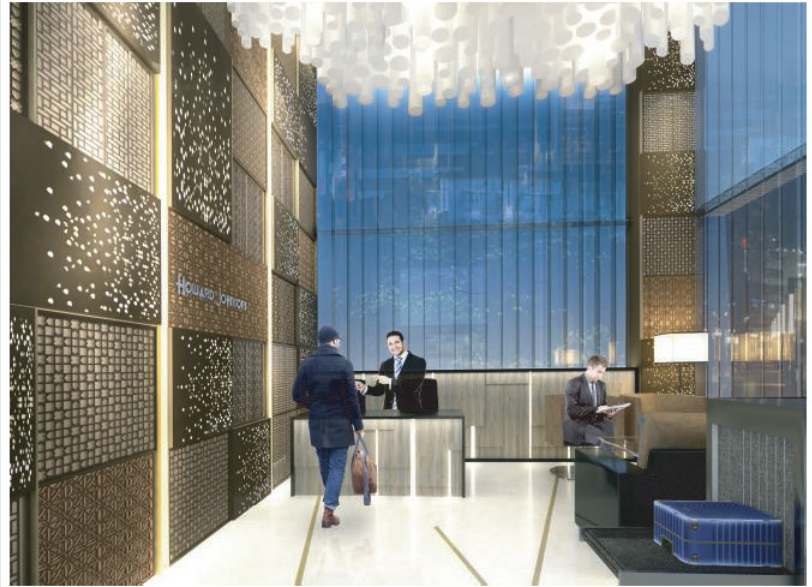
4 STAR WYNHAM HOTEL

110 KEY

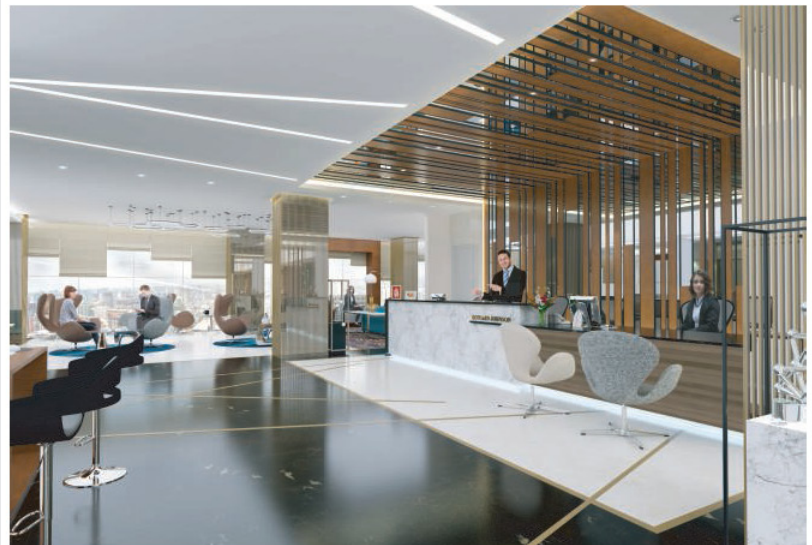
Concierge, Reception, Coffee Shop, Meeting Room, All day dining, Pre-Function, Banquet Hall BAR, GYM, SPA, Saloon, Thai Restaurant, Mocktail & Refreshment, Roof Top Lounge, Corridor, Parking, Toilet Area & Lift Lobby

## Scope of Work:

1. Interior design



Concierge



Reception

## HOWARD JOHNSON HOTEL AT MOHAKHALI, DHAKA



Coffee Shop

## HOWARD JOHNSON HOTEL AT MOHAKHALI, DHAKA



Meeting Room



Lift Lobby



## HOWARD JOHNSON HOTEL AT MOHAKHALI, DHAKA



Pre Function



Banquet Hall

## HOWARD JOHNSON HOTEL AT MOHAKHALI, DHAKA



All day Dining



## HOWARD JOHNSON HOTEL AT MOHAKHALI, DHAKA



Bar



Gym



## HOWARD JOHNSON HOTEL AT MOHAKHALI, DHAKA



Spa



Toilet

## HOWARD JOHNSON HOTEL AT MOHAKHALI, DHAKA



Thai Restaurant



Rooftop lounge

## HOWARD JOHNSON HOTEL AT MOHAKHALI, DHAKA



Roof Top



Mocktail Lounge



**R**ESIDENTIAL APARTMENT/CONDOMINIUM

## NAVANA UTTARA APARTMENT

### Land Area:

10 katha

### Location:

Uttara, Dhaka, Bangladesh

### Client:

Navana Real Estate Ltd.

### Built Area:

3175 sqm

### Features:

24 nos Apartment, 24 nos parking, Community space, Roof top Garden, Open Terrace, Stair, Lift & Lobby area, Guard Room, Waiting Area, Mechanical room.

### Scope of Work:

1. Architectural design
2. Structural design
3. Interior design
4. MEP Design



## NAVANA UTTARA APARTMENT





## NAVANA 48 AGRABAD APARTMENT

### Land Area:

7.25 katha

### Location:

Plot-48, CDA, Chittagong

### Client:

Navana Real Estate Ltd.

### Built Area:

2250 sqm

### Features:

16 nos Apartment, 15 nos parking, Community space, Roof top Garden, Open Terrace, Stair, Lift & Lobby area, Guard Room, Waiting Area, Mechanical room.

### Scope of Work:

1. Architectural design
2. Structural design
3. Interior design
4. MEP Design



## NAVANA 48 AGRABAD APARTMENT



# CONDOMINIUM AT DHAKA

## Land Area:

22 katha

## Location:

Badda, Dhaka, Bangladesh

## Client:

ARENA PROPERTIES LTD.

## Built Area:

20700 sqm

## Features:

180 nos Apartment  
136 nos parking ( Including Basement)  
Community space, Roof top Garden, Open Terrace,  
Stair, Lift & Lobby area, Guard Room, Waiting  
Area, Mechanical room.

## Scope of Work:

1. Architectural design
2. Structural design
3. Interior design
4. MEP Design





## ARENA APARTMENT AT UTTARA

### Land Area:

5 katha

### Location:

Uttara, Sector-4, Dhaka, Bangladesh

### Client:

ARENA PROPERTIES LTD.

### Built Area:

1170 sqm

### Features:

10 nos Apartment, 12 nos parking, Community space, Roof top Garden, Open Terrace, Stair, Lift & Lobby area, Guard Room, Waiting Area, Mechanical room.

### Scope of Work:

1. Architectural design
2. Structural design
3. Interior design
4. MEP Design



## BARIDHARA RESIDENCE-VERTICAL LIVING

### Land Area:

10 katha

### Location:

Baridhara, Dhaka, Bangladesh

### Built Area:

3,500 sqm

### Client:

Owner, KOHLER.

### Features:

#### Single House Vertical Living

Reception, Community space, Private Office, GYM, Terrace, Family Living & Dining, Bed rooms, Swimming Pool & Other Facilities .

### Scope of Work:

1. Architecture design
2. Interior design (with Leo Inter, Bangkok)
3. Structure Design



## BARIDHARA RESIDENCE-VERTICAL LIVING





## BARIDHARA RESIDENCE-VERTICAL LIVING



BARIDHARA RESIDENCE-VERTICAL LIVING (OTHER OPTION)





BARIDHARA RESIDENCE-VERTICAL LIVING (OTHER OPTION)





## BARIDHARA RESIDENCE-VERTICAL LIVING



Bedrooms

## BARIDHARA RESIDENCE-VERTICAL LIVING



Toilet Area



## BARIDHARA RESIDENCE-VERTICAL LIVING



Toilet Area



## BARIDHARA RESIDENCE-VERTICAL LIVING



Family Living

## BARIDHARA RESIDENCE-VERTICAL LIVING



Stair & Lift Lobby

## BARIDHARA RESIDENCE-VERTICAL LIVING



Living Hall



## PROPOSED SERVICE APARTMENT

### Land Area:

1 Bigha

### Location:

Baharchara, Cox's Bazar.

### Client:

Coral Reef Properties Ltd.

### Features:

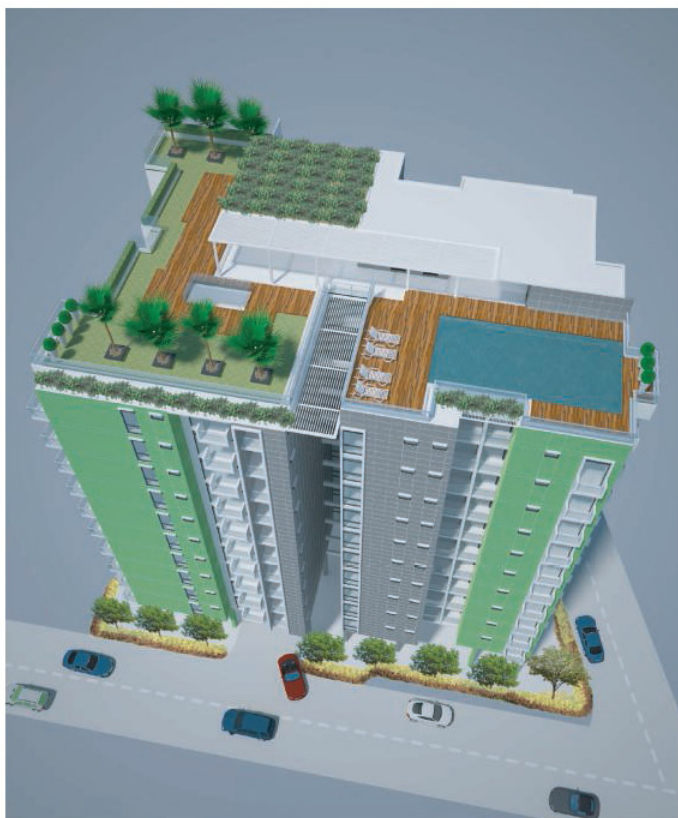
Arrival & Lounge, Swimming Pool, Change & Locker, Basement Parking, Terrace & Apartments.

### Scope of Work:

1. Architectural design
2. Interior design



## PROPOSED SERVICE APARTMENT



# RESIDENTIAL APARTMENT

## Land Area:

5 Katha

## Location:

Mirpur, Dhaka, Bangladesh.

## Client:

M & J Builder's Ltd

## Features:

Parking, Terrace , Roof top Garden & Apartments.

## Scope of Work:

1. Architectural Concept design





## RESIDENTIAL APARTMENT



# SHELTECH PRIME

## Land Area:

5 Katha

## Location:

Moghbazar, Dhaka, Bangladesh.

## Client:

Sheltech (Pvt.) Ltd.

## Scope of Work:

1. Architectural design (with BSA)
2. Interior design (with BSA)





# SHELTECH ANYYOTOMA

**Land Area:**

5 Katha

**Location:**

Shantinagar, Dhaka, Bangladesh.

**Client:**

Sheltech (Pvt.) Ltd.

**Scope of Work:**

1. Architectural design (with BSA, Thailand)
2. Interior space planning (with BSA, Thailand)





## SHELTECH APARTMENT



### Features:

Drawing room

Dining room

## SHELTECH APARTMENT



### Features:

Drawing room

Dining room

## AMD'S RESIDENCE

### Land Area:

27 Bigha

### Location:

Bashundhara, Dhaka, Bangladesh

### Client:

AMD, Bashundhara Group.

### Features:

#### A Mansion with Californian Architecture

Covered Car Drop off, Lofted Arrival Hall, Grand stair hall, Indoor play Area, Outdoor play area, swimming pool, prayer space, security room, salon, Gym, Squash Court, Library, Study & Music Room, Formal living & Dining, Garden, Guest bed, Family & Dining Space, Master Bed Master Toilet with Walk in Closet, Kitchen Area, Servants' Quarter of around 100 pax.

Basement Entertainment Zone, Personal Club.

### Scope of Work:

1. Architectural design (with BSA Thailand)
2. Interior design (with BSA, Thailand)
3. MEP Design (UCC, Thailand)
4. Automation & BMS (ihome, Singapore)
5. Landscape Design (with Fitco, UAE)





## AMD'S RESIDENCE

### Challenges:

It is a mansion of it's kind.

The house for a famile of four persons, Owner, his lady and the two kids.

Owner is the 4th son of Bashundhara Group Chairman.

We took the challenge of making a cozy house with a great atmosphere of a californian mansion. The land was huge - 27 bigha property so the main challenge was to design all the corners so it becomes a complete living place, sufficiently give the owner feelings of comfort and getting all the facilities with luxury & pleasure. The true feelings of a home.

The challenge of modern day living the security & automation of all the facilities was the challenge for as it is the house for the high profile person. So his need of control all the places of his house and comfort for his family especially security was the concern.

All the high end material from around the world like Italian marble, granite, true use of marble baluster in the terrace, the bath rooms with his & her walk in closets, couple lavatories, separate washing tub, WC and powder room, wall to wall cabinets, overlooking Galleries, verandahs with room to view all the facilities accomodating in the design.

The challenge also was in the coordination of all the services during construction during MEP installation, ducting & also in moulding making & bringing in the site from Thailand for fixing with each mood space by space dismantling and re-assembling ... pavers ... all.

Designing the Swimming Pool with the Party area on the Pool Deck and the Lawn extended with the complete Landscape.

Gateway, backyard, high Terrace on the east and west side Club building all extended with the iconic center loft clerestorey structure shaping the elegance of the majestic Villa Mansion.



## AMD'S RESIDENCE





## AMD'S RESIDENCE





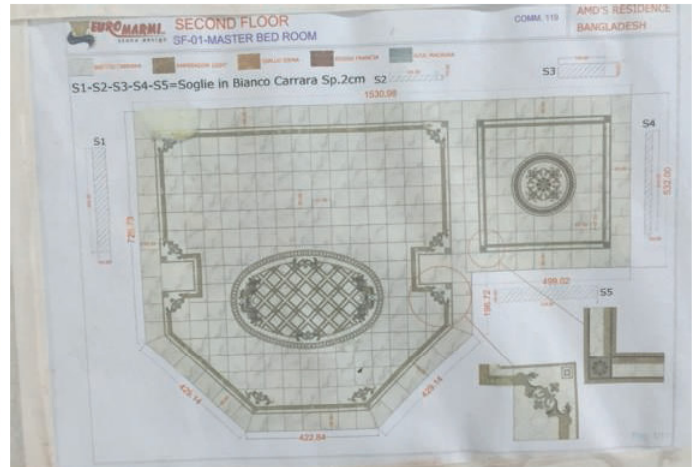
## SHELTECH BITHIKA



## AMD'S RESIDENCE



## AMD'S RESIDENCE





# SHELTECH BITHIKA

## Land Area:

73.00 Bigha

## Location:

114/1 2nd colony, Mazar Road, Mirpur, Dhaka.

## Project Type:

14 Storied (G+13), Mixed use Building.

## Client:

Sheltech (Pvt.) Ltd..

## Features:

Fountain at entry gate, Picturesque Landscape, Swimming Pool, Separate Gymnasium for male and female, Community Hall, Restaurant, Bank & ATM Booth, Pharmacy, Super shop, Commodity store, Saloon, Vast play area for children, Prayer room, Guest parking, Scenic jogging track along the site, Standard fire fighting system, CC TV, Rain water harvesting, Solar panel, Waste treatment plant, Public addressing system in parking area, Home theatre, 4 No of tower, 184 Nos units, 192 car parking.

## Scope of Work:

1. Architectural design (with BSA, Thailand)
2. Interior design (with BSA, Thailand)



# BDG CONDOMINIUM AT BASHUNDHARA

## Land Area:

4875 sqm

## Location:

Bashundhara R/A, Baridhara Dhaka, Bangladesh.

## Client:

BDG GROUP.

## Built Area:

30330 sqm

## Features:

132 nos Apartment

235 nos parking

Five star condo facility, Separate cycling track, Two open green courts, Gym, Spa, Sauna, Jacuzzi, Kids zone, Gents club, Ladies club, Swimming pool, Kids pool, Library, Cafeteria, Multipurpose hall, Multimedia theatre, Wide & open space, 3 Basement car parking

## Scope of Work:

1. Architectural design
2. Interior space planning





## GLIMPSES OF CONSTRUCTION



1. AMD'S RESIDENCE (BG GROUP)
2. MOVENPICK GRAND SYLHET HOTEL
3. SHELTECH PLATINUM RESIDENCE



**COMMERCIAL**

## 12 STORIED COMMERCIAL TOWER BSA PLAZA

### Land Area:

1.20 Bigha

### Location:

Kandirpar, Raneir Bazar, Comilla.

### Client:

Barrister Shafique Ahmed

### Developer:

TOPLINE

### Built Area:

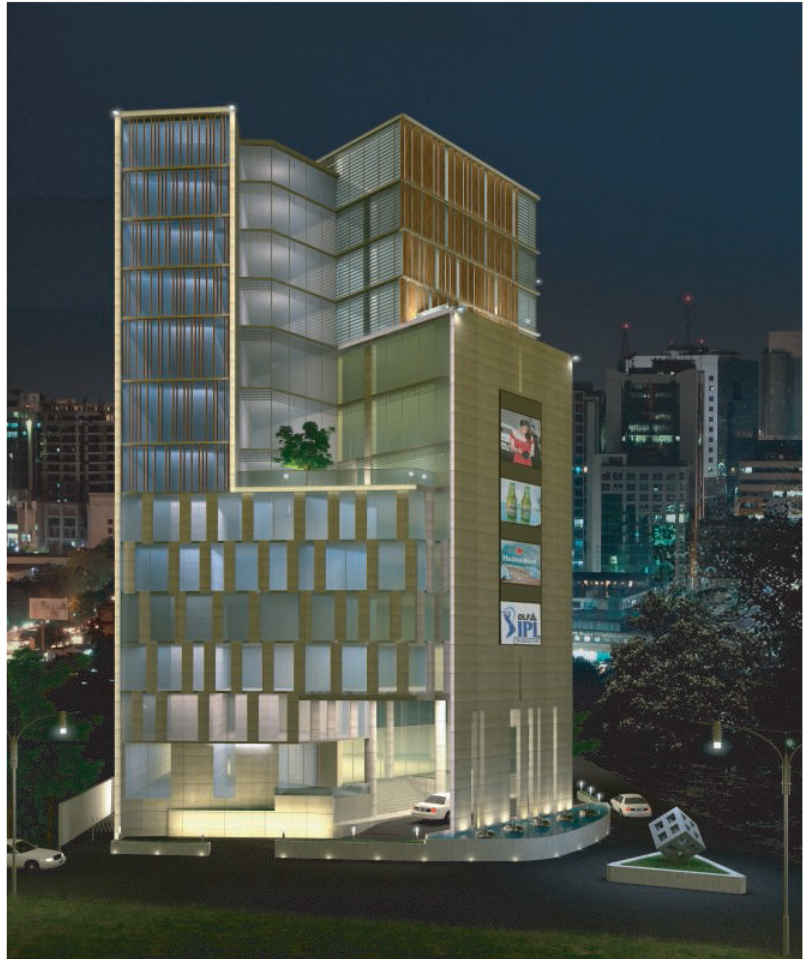
14,365 sqm

### Features:

Shopping Mall, Food Court, Children Play Area, Bowling, Cineplex, Neonatal & Paediatric Clinic, Banquet Hall, Convention Hall, Swimming Pool, Health Club, Gym, BBQ Rooftop, ATM Booth, Coomerical Office.

### Scope of Work:

1. Architectural design
2. Structural design
3. Interior design
4. MEP Design



## 12 STORIED COMMERCIAL TOWER BSA PLAZA

### CHALLENGES :

Providing the locality something new in their lifestyle which can be an added value. The mixed use development accomodating Mall and Clinic, their seperate entry was the key design consideration. Moreover another two component like Banquet Hall, its services and Rentable Commercial floors are challenge to make in the same block of only 1.20 Bigha.

Other top challenge was giving the outlook of the structure which reflects that form follows the function. So people can easily identify the use of each function distinctly and the grnad entry with all the focal points.

Marketing challenge was determining the size of differnet selling units in the shopping mall and making it successful so it can be popular when it will be in operation.





12 STORIED COMMERCIAL TOWER BSA PLAZA



## RUPNAGAR CITY CENTER

### Land Area:

2.5 Bigha

### Total Built Area:

40,000 sqm

### Location:

RUPNAGAR, MIRPUR, DHAKA, BANGLADESH

### Client:

RUPNAGAR BABOSHAY SHOMOBAY SHAMITY LTD.

### Features:

Retail shop, Commercial space, Apartments, Super Shop, Community area.

### Scope of Work:

1. Architectural design
2. Structural design
3. MEP Design

### Challenges:

Main Challenge was working with the association of 225 people. Design challenge was accepting the concept of Super Shop instead of Katcha bazar which is conventional market to the owner. Making a brilliant structure with a good mood of high lifestyle among the community of middle class of Mirpur Area. It becomes the City Center.





# HOLIDAY INN FINANCE TOWER

## Land Area:

10 Katha

## Location:

Tejgaon, Dhaka, Bangladesh.

## Client:

Marium Group

## Features:

Arrival & Lounge, Banquet Hall , Office area, BBQ, Kids Play area, Terrace , Roof top Garden.

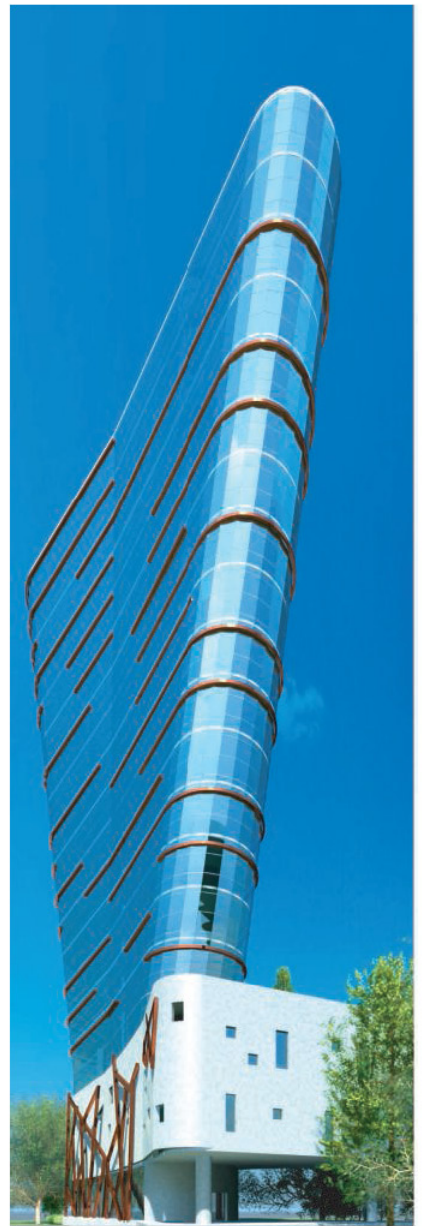
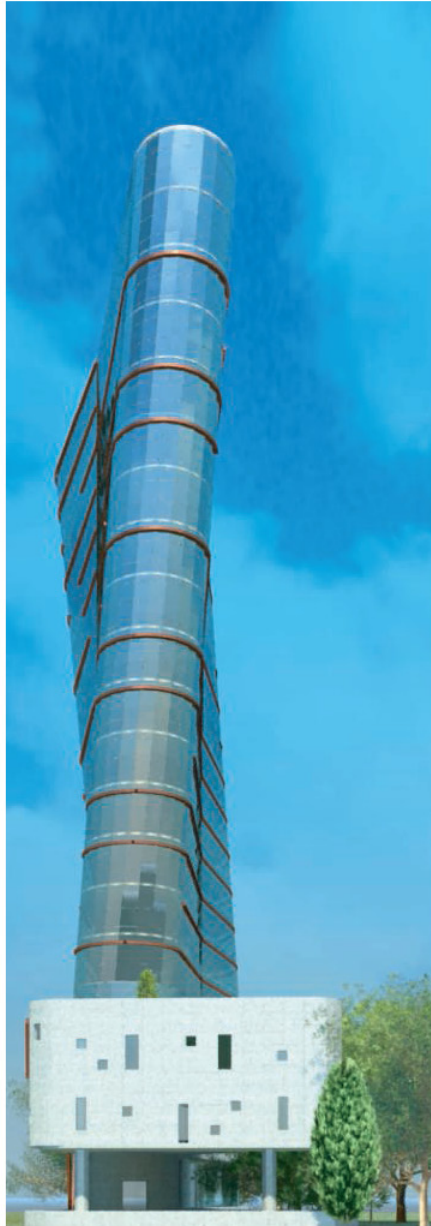
## Scope of Work:

1. Architectural design
2. Interior design





## HOLIDAY INN FINANCE TOWER



# BASHUNDHARA AMUSEMENT PARK

## Land Area:

7.75 Bigha

## Total Built Area:

29,450 sqm

Super Shop: 5040 sqm

Shopping Mall: 9175 sqm

Entertainment Zone & Fun Park: 4055 sqm

Food court & Specialty Restaurant: 8110 sqm

Cineplex: 4055 sqm

## Location:

Bashundhara R/A, Baridhara, Dhaka, Bangladesh

## Client:

Bashundhara Group.

## Features:

Super shop, Boutique Shop, Retail Shop, Kiosk, Food Court, Specialty Restaurant, Souvenir Shop, Soft play zone & Indoor Adventure Game, Cineplex with Premier Hall.

## Scope of Work:

1. Architectural Concept design
2. Interior Concept design

## Challenges:

Management of Access of Shopping Mall and Super shop at Ground Level was the main challenge of the design. The flame like top of the structure conveys the happening zone.



# BASHUNDHARA GROUP HEAD QUARTER-03

## Land Area:

9.00 Bigha

## Total Built Area:

29,810 sqm

## Location:

Bashundhara R/A, Baridhara, Dhaka, Bangladesh

## Client:

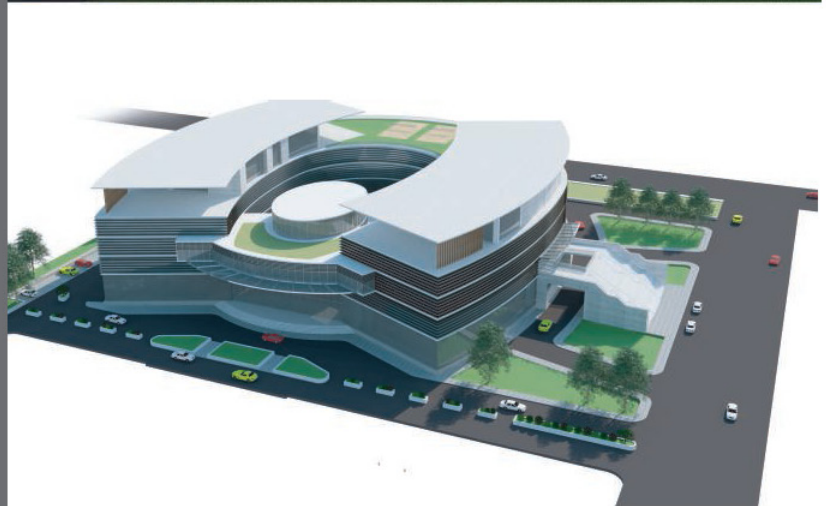
Bashundhara Group.

## Features:

VIP Entry & Common Entry, Protocol, Meeting Room, Banquet Hall, Despatch section, Share Holder Office, 2 Category Canteen, Open Terrace, Owner's Room, DMD Office, 12 Sector Office, Exhibition Gallery, 4 Bed- Hospital Facilities, First Aid + Nurse Station, Prayer Space, Gym + Supporting, Badminton Court, Watch and Gallery

## Scope of Work:

1. Architectural Concept design
2. Interior Concept design





# ENVOY OFFICE BUILDING

## Land Area:

2344.90 sqm

## Location:

Bhaluka, Mymensingh, Bangladesh.

## Client:

Envoy Group

## Features:

Arrival & Lounge, Multipurpose Hall, Showroom, Meeting room, Office space, Auditorium, Chairman office, Director's office, Board meeting, Function room, Waiting area.

## Scope of Work:

1. Architectural design
2. Interior design





PROPOSED MEDLAR COMPLEX  
NIKUNJA, DHAKA, BANGLADESH



NEW ENVOY TEXTILES FACTORY'S OFFICE  
BANGLADESH



PROPOSED 5-STAR HOTEL, SERVICED APARTMENT & COMMERCIAL COMPLEX  
PROJECT DEVELOPMENT BASHUNDHARA GROUP  
DHAKA, BANGLADESH



**Velocity** Entertainment  
Dhaka, Bangladesh & Sport Club





## SWIMMING POOL DESIGN



NITOL INSURANCE OFFICE AT DILKUSHA



Office Space



Meeting Room



Meeting Room



## NITOL INSURANCE OFFICE AT DILKUSHA



Office Space



Office Space



Meeting Room



**I**NDUSTRIAL

## FACTORIES OR INDUSTRIAL PROJECTS

### GoodMann Pharmaceuticals Ltd.

Industrial complex for **GoodMann Pharmaceuticals Ltd. at Maona, Sreepur**. A mid level pharmaceuticals industry designed for the **production of penicillin non-penicillin and tablet division under the same building** but keeping provision of all the three parts in separate block in the future. This was the main challenge of this project. As In case of designing pharmaceutical industry production line recommends to keep all the three components penicillin, non-penicillin & tablet division in three separate production blocks.

### VIYELLATEX & YOUNGONES KNITTING & DYEING INDUSTRY.

**10 Storied Office Tower** with **6 storied industrial building** for **VIYELLATEX Ltd. a concern of YOUNGONES Fashion of Korea at Gazipur, Dhaka**. This is designed for the **knitting & dyeing industry**. The project is located at Gazipura Bus Stand **on the highway of Dhaka to Gazipur district**. Area of this factory is approximately **45,000 sft per floor** with a 10 storied office Glass Tower building in the front with a floor area of **12,000 sft per floor**. The challenge of the design was to make an office head quarter for the owner as it was their first project to put on the footstep in garments sector on way of their successful journey as a leader in this field. The challenge was to accommodate an ETP (Effluent Treatment Plant) inside the project area first of its kind in Bangladesh Industry Sector to facilitate and abiding the local law of Environment.



## FACTORIES OR INDUSTRIAL PROJECTS

### AQUA FOOD INDUSTRIES

Factory building of **Aqua group for their Mineral Water and Food Section at konabari, Sreepur, Dhaka.**

The factory is **designed for production of food items** like chanachur, pickles, jam etc. and bottled mineral water. The scope of our work was to design the factory building including production, storage/warehouse, master plan of the site, landscaping. The challenge of the design was keeping an existing big water body at the center of the site and setting out the whole factory and bungalow around this keeping a boat deck with a scenic panorama view blending with the existing natural setup of big trees & landscape without destroying any.

### STYLECRAFT GARMENTS INDUSTRY

6storied industrial building for **STYLECRAFT Bangladesh Ltd. at Barabari, Gazipur, Dhaka.** This is designed for the **production of Sweater**. The project is located opposite of the BRRI (Bangladesh Rice Research Institute) **on the highway of Joydevpur in the Gazipur district.** Area of this factory is approximately 36,000 sft per floor. The challenge of the design was the entrance from the main road was through an access of 9 meter width road over the land of Roads & Highways for future widening. Also the land was not quite big to accommodate all the requirements of the Project and their future expansion.





## FACTORIES OR INDUSTRIAL PROJECTS

### Prawn Hatchery-Scampi World Ltd.

The **largest Hatchery for the Prawn seeds in Bangladesh** located in the Sirajganj district. In an area of **2.71 acres of land** including different buildings of production area, quarter for the worker and officers and main office building. The target production capacity of seeds in a year is 8 crores. The total project is designed as a blend to the natural rural outlook finished with **local bangla brick pointing work and fair RCC finish**. The project is designed in association with the production consultant of **Scampi City Hatchery of Kerala, India**.

### Beximco Pharmaceuticals Industry

Factory building for **Beximco Pharmaceuticals Ltd.** For their new **production block at Tongi industrial area, Dhaka**. The responsibility is supervising and partly redesigning as the **local counter part of Ravi Raman Consultants of Hyderabad, India**.

### Interfab Knitting Factory

5 storied industrial building for **Interfab Bangladesh Ltd.** at Barabari, Gazipur, Dhaka. This is designed for the **production of Knitting (Shirt Section)**. The project is located at Barabari **on the highway of Dhaka to Gazipur district** just before Bangladesh Open University. Area of this factory is approximately **25,000 sft per floor along with Administrative Office Zone**. The challenge of the design was the entrance from the main road and making the Admin building along with the Factory block with the same entrance way. We also make the Interior Design and Decoration of office area for area of 15,000 sft.



## FACTORIES OR INDUSTRIAL PROJECTS

### Warid Telecom

Interior Design and Decoration of **Warid Telecom**  
at **Banani, Dhaka** for their different project





## FACTORIES OR INDUSTRIAL PROJECTS



### NAM Convention centre

Stall at NAM Convention centre textile fair.

Client: Jack Traders Space

Spce: 4000 sft

Project Cost: 325000 /=-

Completion Period: 2004